



February 15, 2019

3836 - 3848 SOUTH CAPITOL STREET, SE





February 15th, 2019

©2018 Torti Gallas Urban | 1326 H Street, NE Second Floor | Washington, DC 20002 | 202.232.3132



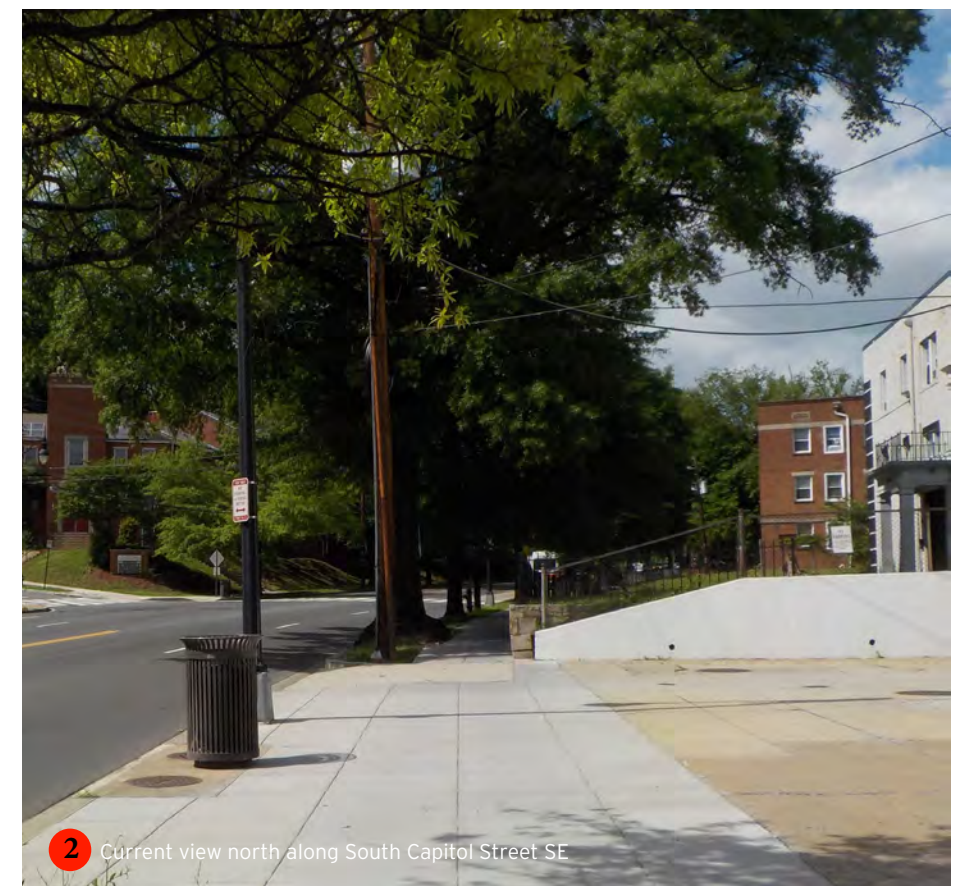
KAYE STERN PROPERTIES

Site Aerial
3836 - 3848 SOUTH CAPITOL STREET, SE





1 View of Northwest corner of current drive aisle of 3836 South Capitol St. SE



2 Current view north along South Capitol Street SE



3 View of Northeast corner of site with existing retaining wall



4 Current 3836 South Capitol Street SE, building entrance courtyard



5 View South of current 3848 South Capitol St. SE building



February 15th, 2019

©2018 Torti Gallas Urban | 1326 H Street, NE Second Floor | Washington, DC 20002 | 202.232.3132



KAYE STERN PROPERTIES

Context Photos
3836 - 3848 SOUTH CAPITOL STREET, SE

G07







February 15th, 2019

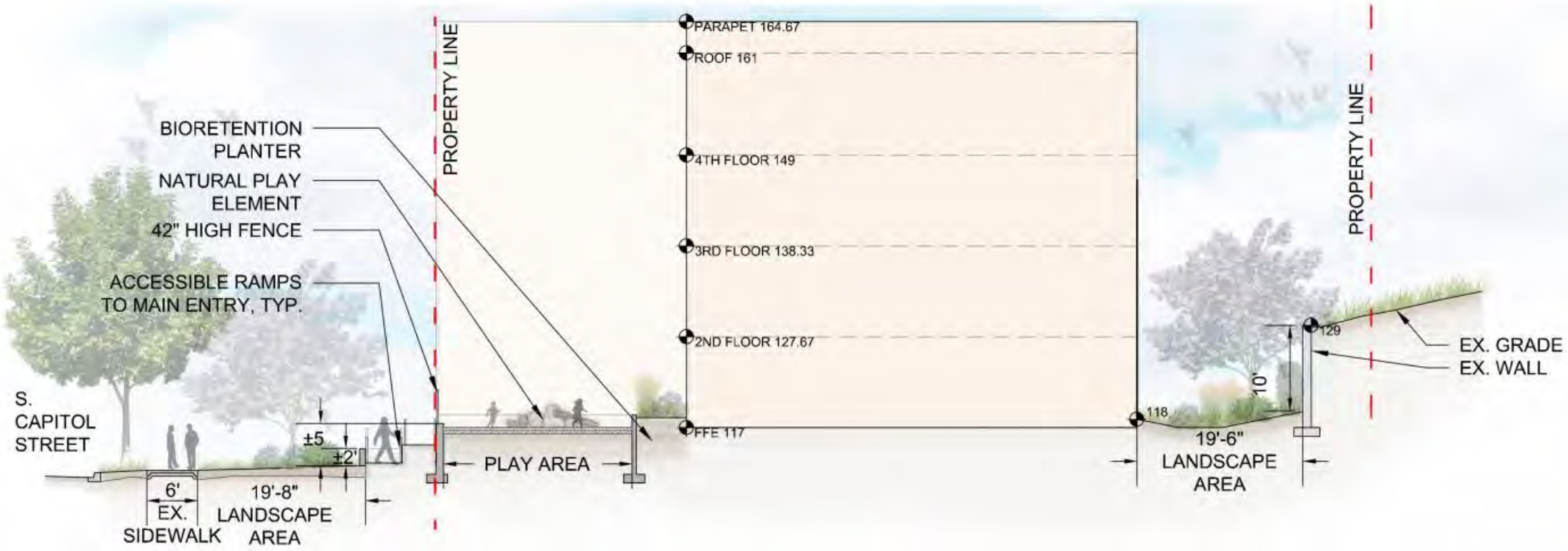
©2018 Torti Gallas Urban | 1326 H Street, NE Second Floor | Washington, DC 20002 | 202.232.3132



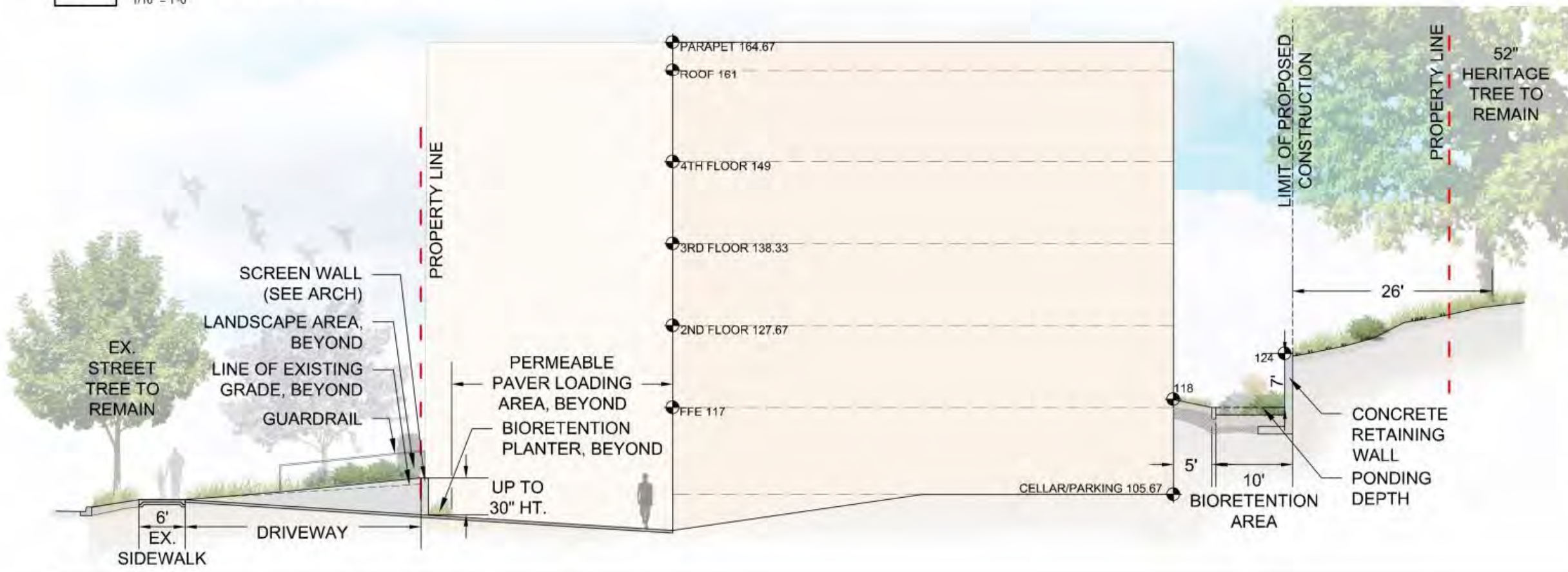
KAYE STERN PROPERTIES

Note: Interior layouts shown on the building plans are schematic. Changes to the layouts, not affecting the exterior envelope or square footage, may occur.

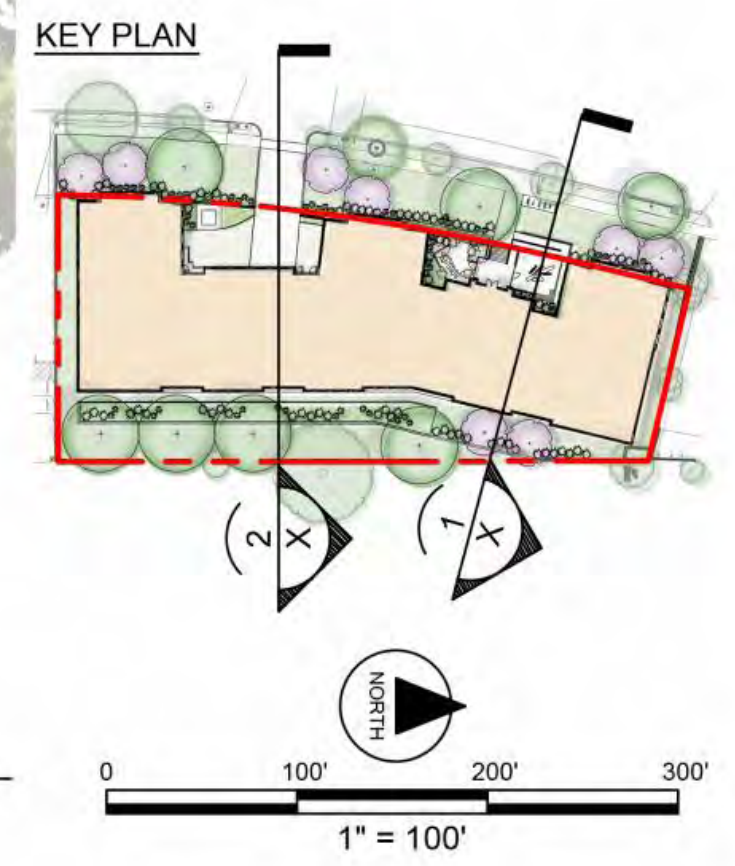
First Floor Plan
3836 - 3848 SOUTH CAPITOL STREET, SE



1 SECTION THRU PLAY AREA
1/16" = 1'-0"



2 SECTION THRU GARAGE ENTRY
1/16" = 1'-0"

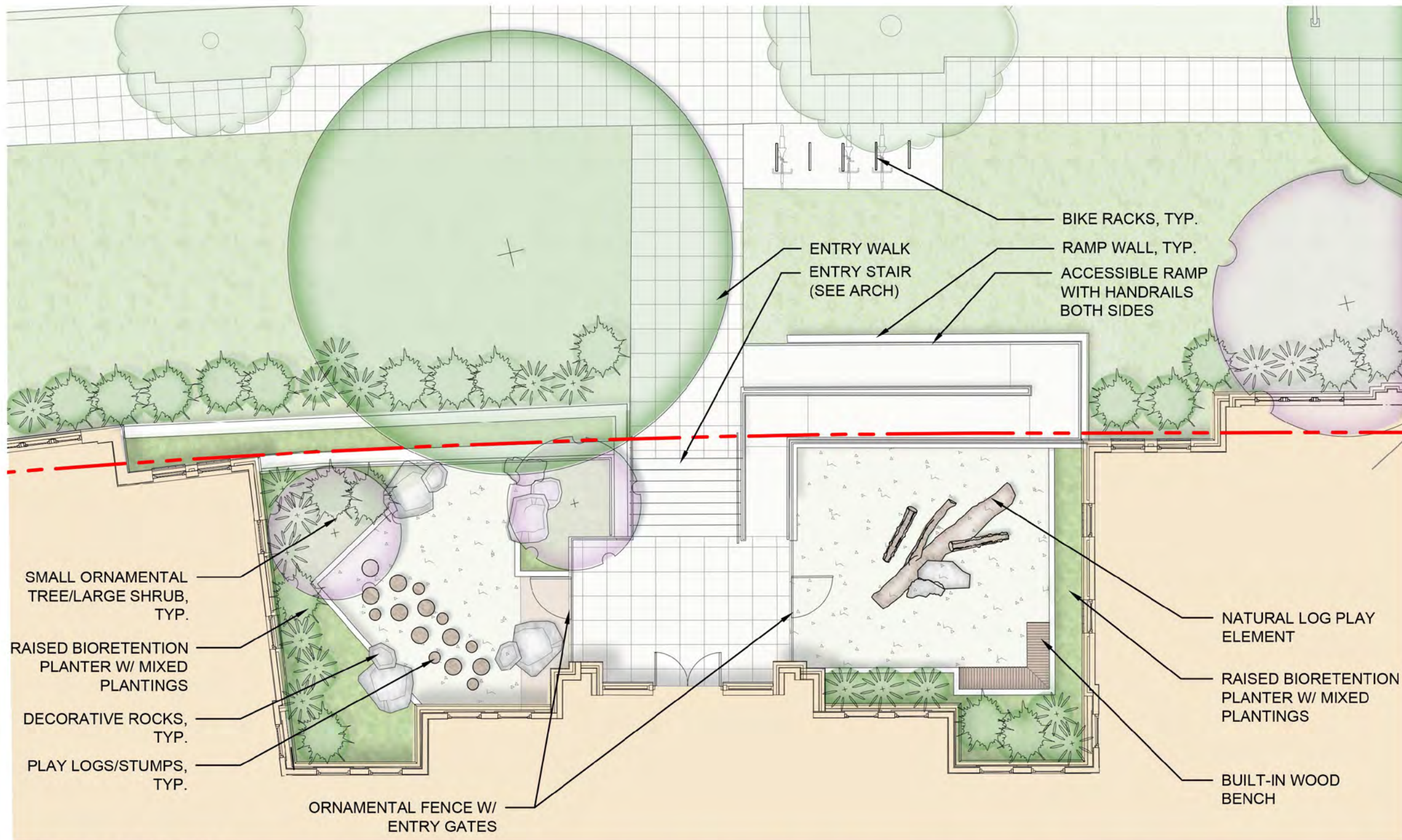


February 15th, 2019 | ©2018 Torti Gallas Urban | 1326 H Street, NE Second Floor | Washington, DC 20002 | 202.232.3132





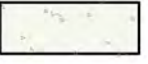



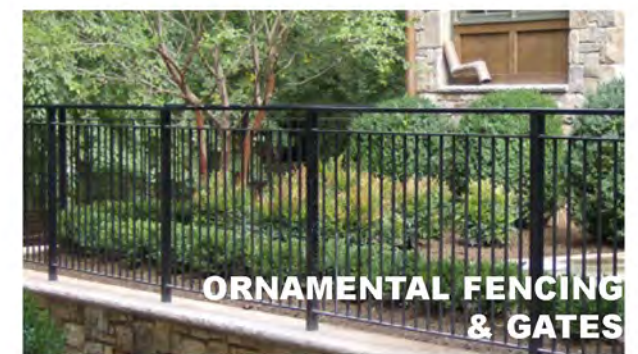
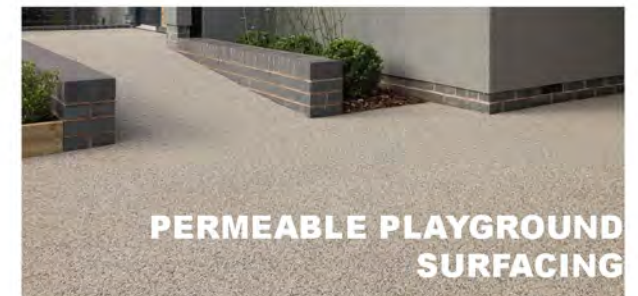
KAYE STERN PROPERTIES

Landscape Sections
3836 - 3848 SOUTH CAPITOL STREET, SE

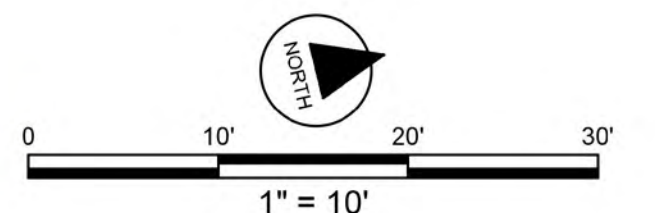
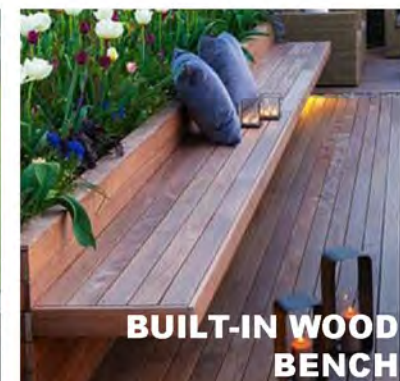


LEGEND:

-  EXISTING TREE
-  MED-LARGE CANOPY TREE
-  ORNAMENTAL TREE
-  SCORED CONCRETE PAVING
-  PERMEABLE PLAY SURFACE
-  LANDSCAPED AREA



PRECEDENT IMAGES

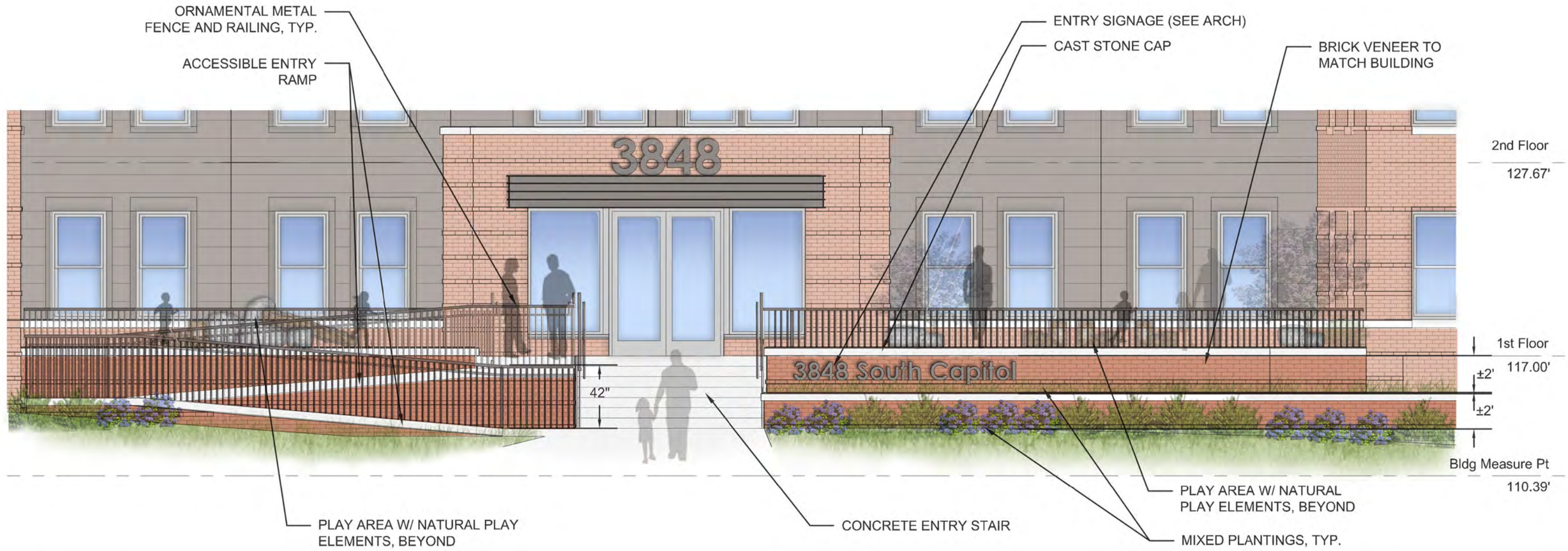


February 15th, 2019 | ©2018 Torti Gallas Urban | 1326 H Street, NE Second Floor | Washington, DC 20002 | 202.232.3132

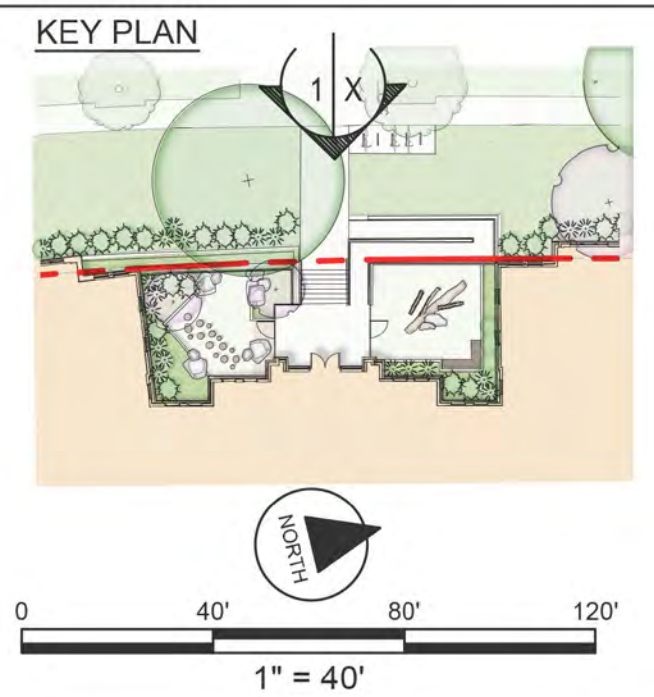


KAYE STERN PROPERTIES

PLAN ENLARGEMENT
3836 - 3848 SOUTH CAPITOL STREET, SE



1 ENLARGED ELEVATION
1/8" = 1'-0"



PRECEDENT IMAGES



February 15th, 2019 | ©2018 Torti Gallas Urban | 1326 H Street, NE Second Floor | Washington, DC 20002 | 202.232.3132



KAYE STERN PROPERTIES

Enlarged Elevation
3836 - 3848 SOUTH CAPITOL STREET, SE





February 15th, 2019 | ©2018 Torti Gallas Urban | 1326 H Street, NE Second Floor | Washington, DC 20002 | 202.232.3132



KAYE STERN PROPERTIES

Architectural Precedents
3836 - 3848 SOUTH CAPITOL STREET, SE



February 15th, 2019 | ©2018 Torti Gallas Urban | 1326 H Street, NE Second Floor | Washington, DC 20002 | 202.232.3132



KAYE STERN PROPERTIES

Architectural Precedents
3836 - 3848 SOUTH CAPITOL STREET, SE



A - West Elevation



B - North Elevation



KEY PLAN



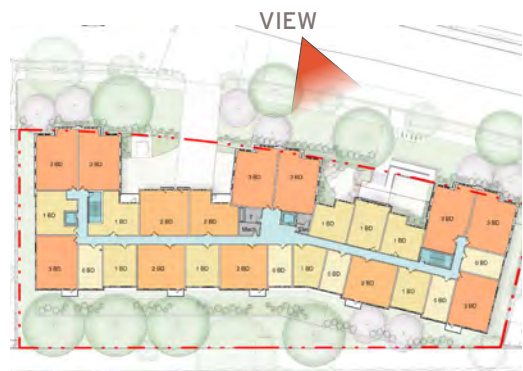
A - East Elevation



South Capitol Street SE.



KEY PLAN



February 15th, 2019

©2018 Torti Gallas Urban | 1326 H Street, NE Second Floor | Washington, DC 20002 | 202.232.3132



KAYE STERN PROPERTIES

Perspective Rendering - Main Entrance
3836 - 3848 SOUTH CAPITOL STREET, SE



February 15th, 2019

©2018 Torti Gallas Urban | 1326 H Street, NE Second Floor | Washington, DC 20002 | 202.232.3132



**TORTI
GALLAS
URBAN**

KAYE STERN PROPERTIES

Perspective Rendering - View North along South Capitol Street, SE
3836 - 3848 SOUTH CAPITOL STREET, SE



February 15, 2019

3836 - 3848 SOUTH CAPITOL STREET, SE